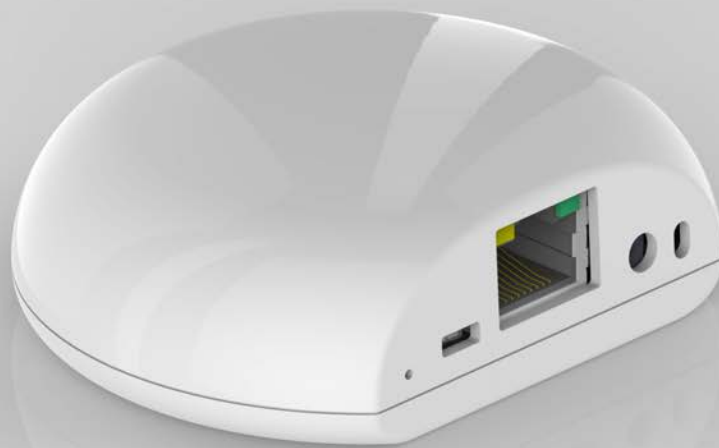


Relay & Contact Sensor POE



OVERVIEW

The Relay & Contact Sensor is a flexible tool to build a Control4 system more effectively.

It combines the capabilities of a repeater and router with 3 contact inputs, 3 relay outputs and a temperature sensor.

The repeater function allows you to join more devices to your network and with the industry-leading performance of the Axxess HPZM Radio Module, this device adds additional router range and capability to your ZigBee network.

POE (Power Over Ethernet) provides alternative power option.

It is similar to the Multi Function Repeater but the addition of relay outputs.



Relay & Contact Sensor POE

RCS-C4ZB-11P

WIRELESS

- Axxess HPZM Radio Module
- ZigBee PRO Compatible (802.15.4)
- Control4 Driver Downloadable
- Long range router capability; successful free range line of sight testing to 1500ft. Range will vary with indoor application.

COMPLIANCE/APPROVALS

FCC Part 15 | IC | CE

TEMPERATURE SENSOR

Accurate to +/- 1°C Operating range of -40°C to 70°C

COLOR

Black | White

REPEATER FUNCTION

Join up to 16 devices and/or extend the range of your ZigBee network.

CONTACT SENSOR FUNCTION

3 contact sensor inputs using RJ12 jack

RELAY FUNCTION

- 3 relay outputs using internal RJ45 jack
- DC Load Max: 1A | 60VDC
- AC Load Max: 1A | 40VAC

DIMENSIONS

W 3.1" x H " x D 2.66" 1.0

W 7.87cm x H 6.76" x D 2.54cm

POWER SUPPLY

- A DC power adapter is included with either a North American, European, UK or Australia/China plug
- Power over ethernet is available via external RJ45 jack

MOUNTING

2 keyholes and screws

DRIVERS

Download from www.axxind.com/dealers/drivers

HOW TO ORDER

axxind.com/dealers

POPULAR APPLICATIONS

Drape and blind controls
Garage doors

WHAT'S IN THE BOX

